

ADMISSION PACKET

BACHELOR OF SCIENCE IN
OCCUPATIONAL THERAPY ASSISTANT
Minor in Health Services Administration

WEBBER[®]
International University

PROGRAM DESCRIPTION

The Bachelor of Science in Occupational Therapy Assistant (BSOTA) Program is an entry-level, 120-credit-hour degree program with a minor in Health Services Administration (HSA), which trains and qualifies graduates to work in the occupational therapy field. The first year of the program sequence prepares students with foundational knowledge and skills in general education that will be integrated and applied in the occupational therapy assistant and health services administration courses offered during the last three years of the Program. Additionally, graduates are prepared to assist with the managerial aspects of the occupational therapy (OT) practice and assume leadership roles within the profession.

Students will initially enroll in the pre-OTA bachelor's degree program, during which they will complete general admission requirements. Once these general education prerequisites are fulfilled, students can apply for admission into the OTA program. The application process for program admission is online and can be accessed via OTACAS, which is open for submissions every July. The program offers admission in two cohorts each year: one in the fall and another in the spring. As students progress through their foundational courses, they will need to decide which cohort aligns best with their educational goals and timelines.

The BSOTA Program supports cross-cultural diversification within the Program and profession. It advocates for equal opportunity for all students regardless of race, color, national origin, gender, religion, disability, age, veteran status, or marital status.



MISSION

To provide students a quality, innovative, dynamic and inclusive education that will prepare graduates through the development of critical thinking, problem solving and sound clinical skills to enable them to serve as leaders and make an impact in their communities through life-long learning.

VISION

To be recognized as a distinguished program in the development of clinical professionals and leaders in the community.

CORE VALUES



Integrity



Trust



Quality



Professionalism



Diversity



Inclusion



Equality



Accountability

ACCREDITATION STATUS

The Bachelor of Science in Occupational Therapy Assistant (BSOTA), with a Minor in Health Services Administration was granted with CANDIDACY STATUS on December 2020 by the Accreditation Council for Occupational Therapy Education (ACOTE) of the American Occupational Therapy Association (AOTA). The BSOTA Program may now admit students by August 2022 and may proceed to the Pre-accreditation Review step of the accreditation process, which is due on or before July 1, 2024.

The program must have a pre-accreditation review, complete an on-site evaluation, and be granted Accreditation Status before its graduates will be eligible to sit for the national certification examination for the occupational therapy assistant administered by the National Board for Certification in Occupational Therapy (NBCOT). After successful completion of this exam, the graduate will be a Certified Occupational Therapy Assistant (COTA). In addition, the State of Florida requires licensure in order to practice. Note that a felony conviction may affect a graduate's ability to sit for the NBCOT certification examination or attain state licensure.

For more information,



One Bank Street, Suite 300
Gaithersburg, MD 20877-4150
Tel. (301) 990-7979
www.nbcot.org



7501 Wisconsin Avenue, Suite 510E
Bethesda, MD 20814
Tel. (301) 652-6611 ext. 1184
www.acoteonline.org



7501 Wisconsin Ave., Suite 510 E.
Bethesda, MD 20814-6519
Tel. (301)-652-6611
www.acoteonline.org



ADMISSION GUIDELINES

The Bachelor of Science in Occupational Therapy Assistant (BSOTA) Program is a limited admission 120-credit-hour bachelor degree program. The Program admits two classes every year: one in the fall and a second one in the spring.

CANDIDATES



W

Webber Students: Applicants interested in pursuing the BSOTA degree must be in the "Pre-OTA" major and attend all mandatory meetings scheduled by the program before admission.

NW

Non-Webber students: Apply for admission to Webber at www.webber.edu/apply-to-webber . Admission application is Free. Students need to meet all general admission requirements for Webber. Applicants interested in pursuing the BSOTA degree will select "Pre-OTA" when declaring their major. Students completing their prerequisites at other academic institutions need to confirm that all courses are equitable to the Webber prerequisite required course list and submit transcripts from all institutions attended.



GRADE POINT AVERAGE (GPA)

Students should have a minimum cumulative GPA of **2.50** on the pre-requisite courses.

ADMISSION GUIDELINES

PRE-REQUISITE COURSES

Students should complete all the following courses (34 credits) prior to admission to the program:

- ENG111 English Composition 1 (3)
- ENG112 English Composition 2 (3)
- ENG280 Foundations of Rhetoric (3)
- HUM Any Humanities approved for Gen Ed (3)
- MAT121 College Algebra (3)
- MAT225 Introduction to Statistics (3)
- PSY101 Introduction of Psychology (3)
- HSC254 Basic Principles of Disease (3)
- BIO120 Medical Terminology (2)
- BIO221C Human Anatomy & Physiology I (4)
- BIO222C Human Anatomy & Physiology II (4)



GRADES

Prerequisite courses must be completed by the time of application to the BSOTA program, with a minimum of "C". A minimum of "C" is required for BIO221C Human Anatomy & Physiology I /Lab and for BIO222C Human Anatomy & Physiology II /Lab.

OBSERVATION HOURS

Applicants must complete AT LEAST **12** hours of supervised observation of occupational therapy services by the time of application to the Program.

- Students are responsible for finding facilities to meet the observation hours requirement.



ESTIMATED COST

 <p>\$13,146 TUITION PER SEMESTER</p> <p>FULL TIME STUDENT (FL RESIDENT AND OUT-OF-STATE)</p> <p>ALL FEES APPLY TO FULL-TIME DAY STUDENTS (12-16 HOURS PER SEMESTER).</p>	 <p>ESTIMATED INDIRECT EXPENSES</p> <table><tr><td>\$2,500 BOOKS & SUPPLIES</td><td>\$500 INSURANCE, PHYSICAL EXAM, BACKGROUND CHECKS, DRUG TESTING, CPR, ETC.</td></tr></table>	\$2,500 BOOKS & SUPPLIES	\$500 INSURANCE, PHYSICAL EXAM, BACKGROUND CHECKS, DRUG TESTING, CPR, ETC.				
\$2,500 BOOKS & SUPPLIES	\$500 INSURANCE, PHYSICAL EXAM, BACKGROUND CHECKS, DRUG TESTING, CPR, ETC.						
 <p>\$2,100 3-YEARS</p> <p>PROGRAM FEES</p> <p>UNIFORMS, LABS, ASSOCIATIONS, CERTIFICATIONS, LICENSURE, ETC</p>	 <table><tr><td>BOARDING</td><td>MEALS</td></tr><tr><td>\$3,300 PRICES WILL VARY PER ROOM SELECTION AND MALE AND FEMALE ROOMS</td><td>\$2,640 PRICES WILL VARY PER MEAL PLAN</td></tr><tr><td colspan="2">PER SEMESTER</td></tr></table>	BOARDING	MEALS	\$3,300 PRICES WILL VARY PER ROOM SELECTION AND MALE AND FEMALE ROOMS	\$2,640 PRICES WILL VARY PER MEAL PLAN	PER SEMESTER	
BOARDING	MEALS						
\$3,300 PRICES WILL VARY PER ROOM SELECTION AND MALE AND FEMALE ROOMS	\$2,640 PRICES WILL VARY PER MEAL PLAN						
PER SEMESTER							

For more details about student expenses (fees that may vary based on personal choices such as transportation, boarding, meals), check out the current [Webber Catalog](#).

Financial Assistance

Webber International University makes every effort to keep costs at a minimum while maintaining a high level of instruction and adequate facilities. The Webber International University Office of Financial Aid administers financial assistance funds entrusted to the University by generous individuals and organizations and funds made available by the state and federal governments to assist students. More information can be found at the [Webber Financial Aid office](#).

Applying for Financial Assistance

To be considered for financial assistance, students must first be accepted for admission. Students must file the Free Application for Federal Student Aid (FAFSA) to be eligible for need-based financial assistance. The FAFSA is available on the internet at <http://www.fafsa.gov>. Enter the Webber School code when applying.

Electronic filing is recommended and preferred as it is significantly faster to process. Students should accept their financial aid within two weeks of receiving their award letter.

**Webber
School
Code:
001540**

APPLICATION PROCESS

ONLINE APPLICATION

The BSOTA program application is located at the Occupational Therapy Assistants Centralized Application Services (OTACAS) website. The application cycle opens late July and closes beginning of June of each year.

1

Students need to create an OTACAS account at www.otacas.org. Minimal fee required.

2

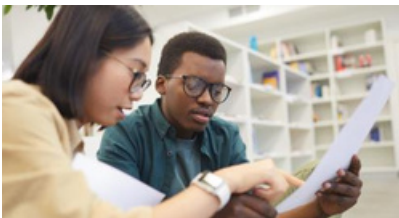
Once the OTACAS account is created, students can log in and complete the information and required forms.

REQUIRED DOCUMENTS



Observation Hours Verification Form

Applicants are required to complete AT LEAST 12 hours of observation of occupational therapy services by the time of application to the Program. Hours must be documented on this form. Complete and upload the [Observation Hours Verification Form](#) (as PDF documents) on the OTACAS page.



Essential Requirements Form

The [Essential Requirements Form](#) describes the essential physical, cognitive, psychological, and emotional abilities that an applicant needs to successfully perform the roles, tasks, and responsibilities of an occupational therapy assistant. Read, sign and upload pdf form on OTACAS page.



History of Convictions/Felony Form

Applicants are required to complete the [History of Convictions/Felony Form](#) to disclose if there is any prior history of convictions and/or felonies. Failure to submit this form will automatically result in your disqualification from admission into the program. Read, sign, and upload the form on the OTACAS page.



CV / Resume

Upload on the OTACAS page your most recent resume (as a PDF file) describing your employment history and/or volunteer service in health care or community-based settings.



Transcripts

Upload on the OTACAS page an unofficial copy of your academic transcripts (as PDF file).

ACCEPTANCE PROCESS

Qualified candidates will receive an invitation to attend a face-to-face interview. The BSOTA program will notify accepted candidates by email after the interview process is completed.



TRANSFER CREDITS

The acceptance and evaluation of credit for transfer is based on various factors, including: the level, content, quality, comparability, and degree program relevance of the proposed transfer credits; the institution's accreditation; and assessment of course equivalency through evaluation of the transcript. Transfer credits are accepted from Regionally Accredited Institutions for appropriate courses which will pertain to the declared degree at Webber International University (Webber).



APPLICATION DEADLINES

The Program operates on a rolling admission plan and will accept applications on a first-come-first-qualified basis. Documents received after **June 1** may not be acceptable for any given fall term. Documents received after **October 31** may not be acceptable for any given spring term.



COHORTS

Two seats are reserved in each the cohort for qualified **Veterans** who meet all the guidelines listed above. Applicants must meet with the Coordinator of Veteran Services to determine Veteran eligibility before applying. The deadline to claim the seats is on **May 1** if applying for the fall term and **Oct 1** if applying for the spring term. Contact the Financial Aid Department at Webber to obtain detailed information on Veterans Education Benefits.

When all **24 seats** for any given class are assigned, the remaining applicants will be placed on the roster for the next cohort available and will receive notification of her/his admission status.



AFTER ACCEPTANCE

Once the student receives notification of acceptance into the BSOTA Program, the student is required to complete the following requirements by a designated date. These requirements also will need to be updated by the students every year.

- Immunization and communicable disease screenings - Some specific immunizations might be required by the fieldwork sites.
- Physical Examination - Cannot be older than one year. A Physical Exam Form is available on the OTA Program Website.
- Drug Screening test (10 panel) - After acceptance and as requested by the BSOTA program.
- CPR- After acceptance and as requested by the BSOTA program.
- Background Check - After acceptance and as requested by the BSOTA program.
 - Be aware that a background check containing misdemeanor and/or felony conviction(s) related to violence or abuse are grounds for rescinding your admission into the program.
- AIDS/HIV - Certification in AIDS/HIV precautions (4 hours) – Before fieldwork and as indicated by the BSOTA program.
- Fingerprinting - After acceptance and as requested by the BSOTA program.

These admission requirements need to be updated by students as requested by the BSOTA program.

Program Curriculum

Year I

Fall Semester

ENG111 - English Composition 1
MAT121- College Algebra
BIO120 - Medical Terminology
HUM- Any Humanities from Gen Education
BIO221C - Human Anatomy & Phys I/Lab

Spring Semester

ENG112 - English Composition 2
BIO222C - Human Anatomy & Phys II/Lab
MAT225 - Intro to Stats
PSY101 - Intro to Psy
HSC254- Basic Principles of Disease

Summer Semester

ENG280 - Foundations of Rhetoric

Year II

Fall Semester

OTH200C - Foundations of OT Practice/Lab
OTH315 - Function. Anat.& Kinesiology II/Lab
DEP200 - Lifespan Development
HSA100 - Principles of Healthcare Service Adm.
HSA210 - Cultural Competency in HSA

Spring Semester

OTH330C - Analysis of Occupational Perf Across Lifespan I/Lab
OTH320C - Functional Anat. & Kinesiology II/Lab
HSA225 - Ethics in Healthcare
HSA126- Accounting for Healthcare

Year III

Fall Semester

OTH325C - Musculoskeletal Cond. & Interv./Lab
OTH310C - OT Skills and Interventions in Mental Health Practice/Lab
OTH335 - Seminar I
HSA301 - Healthcare Settings Analysis
HSA310 Reserch Methods in Healthcare

Spring Semester

OTH400C - Neuromuscular Conditions & Interventions/Lab
OTH305C - OT Skills & Interventions in Pediatric Practice/Lab
OTH340 Level I Fieldwork A
HSA337 - Healthcare Finance

Year IV

Fall Semester

OTH405C - Therapeutic Modalities/Lab
OTH410C - Analysis of Occupational Perf Across Lifespan II/Lab
OTH415 - Seminar II
OTH345L - Level I Fieldwork B
HSA315- Public Policy in Healthcare

Spring Semester

OTH420 - Baccalaureate Project
OTH425L - Level II Fieldwork A
OTH430L - Level II Fieldwork B

***Curriculum Based on Fall Admission**

GRADUATION REQUIREMENTS

Complete all the requirements of the didactic (106 credits) and the fieldwork components (14 credits) of the curriculum with a minimum cumulative GPA of 2.50.



All didactic coursework, fieldwork, and Baccalaureate project must be completed within a period of 5 years.

Students must complete all Level II Fieldwork and the Baccalaureate project within 18 months following completion of core courses.



Demonstrate professional behaviors considered acceptable by faculty and fieldwork supervisors and in accordance with regulations of Webber International University and the BSOTA Program.

NATIONAL CERTIFICATION AND STATE LICENSURE



NATIONAL CERTIFICATION

Graduates of the Webber BSOTA program will be eligible to sit for the National Certification Examination for the Occupational Therapy Assistant, administered by the National Board Certification in Occupational Therapy (NBCOT®). After successful completion of the NBCOT exam, the graduate will be a Certified Occupational Therapy Assistant (COTA).

A felony conviction may affect a graduate's ability to sit for the national certification exam and attain state licensure. Students with a history of felonies and who are considering entering an occupational therapy educational program can have their background reviewed by the National Board for Certification in Occupational Therapy (NBCOT) before actually applying to the program by requesting an Early Determination Review at <https://www.nbcot.org/Students/Services>. The fee for this review is \$225.

For more information, NBCOT can be contacted at (301) 990-7979 or at <http://www.nbcot.org/>.



One Bank Street, Suite 300
Gaithersburg, MD 20877-4150
Tel. 301) 990-7979
www.nbcot.org

STATE ASSOCIATION

All states require licensure to practice occupational therapy; however, state licenses are usually based on the results of the NBCOT certification examination. A felony conviction may affect a graduate's ability obtain a state licensure. Contact your state's occupational therapy licensure for information about their Laws and Rules.



For information about the Florida Occupational Therapy Assistant licensure, contact the [Board of Occupational Therapy](http://www.floridasoccupationaltherapy.gov) of the Department of Health.

P.O. Box 6330
Tallahassee, FL 32314-6330
(850) 488-0595
www.floridasoccupationaltherapy.gov



**College of Health Professions and Sciences
Bachelor of Science in Occupational Therapy Assistant (BSOTA)**



**WE ARE A PROGRAM THAT
AIMS TO PROVIDE
STUDENTS A QUALITY,
INNOVATIVE, DYNAMIC
AND INCLUSIVE
EDUCATION.**



12021 N. Scenic Highway
Babson Park, FL 33827



BSOTA@webber.edu



Tel. (863) 638-2925



www.webber.edu/bsota

Follow us!

